

Task 1.1.3 Soil gas measurements (baseline)
Minutes of the measurements campaign
above shallow exploitations of Anna Mine (PL)

INERIS-GIG-Univ.Oviedo

September, 27th – 30th, 2016

September, 27th, 2016

Agenda:

1. Measurements points localization above and near of shallow exploitations (fig. 1)
2. CO₂ and CH₄ flux measurements (fig. 2)

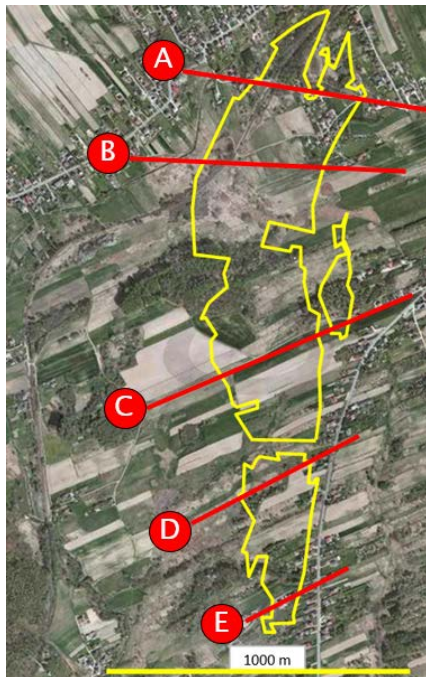


Fig. 1



Fig. 2

September, 28th, 2016

Agenda:

1. CO₂ and CH₄ flux measurements above and near of shallow exploitations
2. Measurements presentation to program partners
3. Discussion on gas measurements in Asturias coal basin

September, 29th, 2016

Agenda:

1. CO₂ and CH₄ measurements above and near of shallow exploitations
2. Measurements points localization in reference zones outside mining exploitations (fig. 3)
3. CO₂ and CH₄ flux measurements in reference zones (fig. 4)
4. Repetition of flux measurements above and near of shallow exploitations, in different temperature conditions

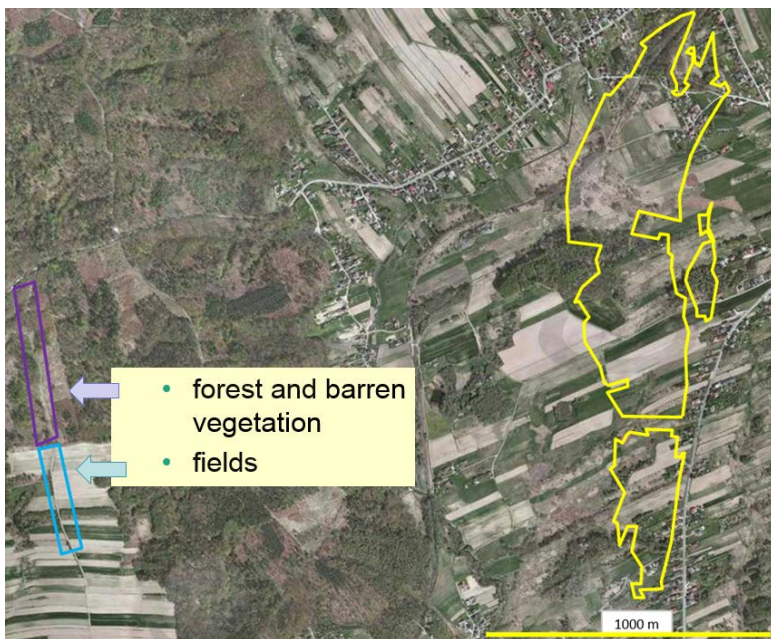


Fig. 3



Fig. 4

September, 30th, 2016

Agenda:

1. Common GIG/INERIS gas measurements on the head of closed pits Powietrzny I, III and IV (fig. 5 & 6)
2. Additional CO₂ and CH₄ flux measurements above of shallow exploitation
3. End of the measurements campaign

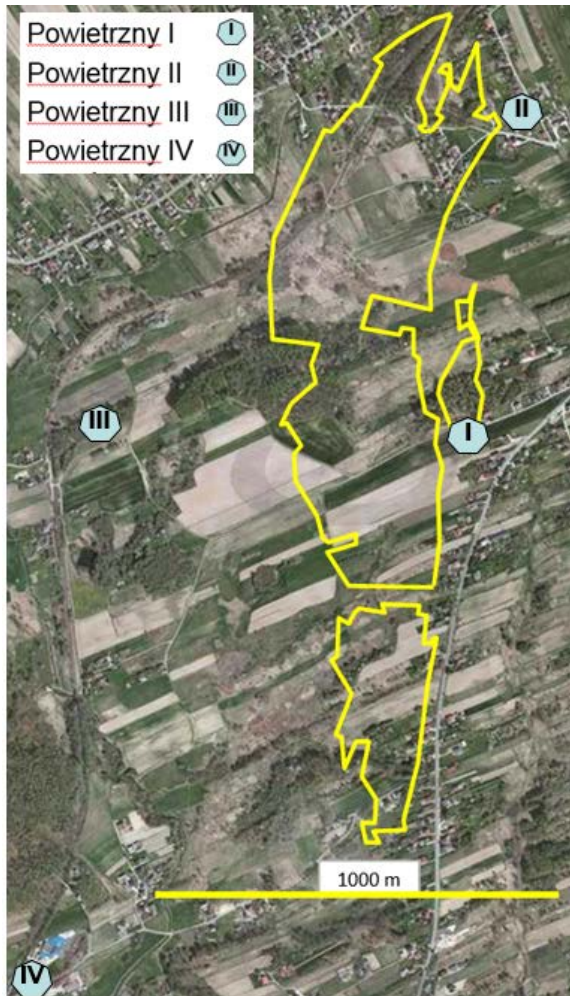


Fig. 5



Fig. 6

INERIS work results

1. About 65 CO₂ and CH₄ flux measurements above and near of shallow exploitations
2. 17 CO₂ and CH₄ flux measurements in reference zones outside mining exploitations
3. About 20 repeated flux measurements above and near of shallow exploitations, in different temperature conditions
4. 12 flux measurements (CO₂ and CH₄) on the head or near head of closed pits
5. Soil gas composition on the head of 3 closed pits